



GAT MONTHLY MEMBERSHIP PROGRESS REPORT

Results as of: 5/31/2023

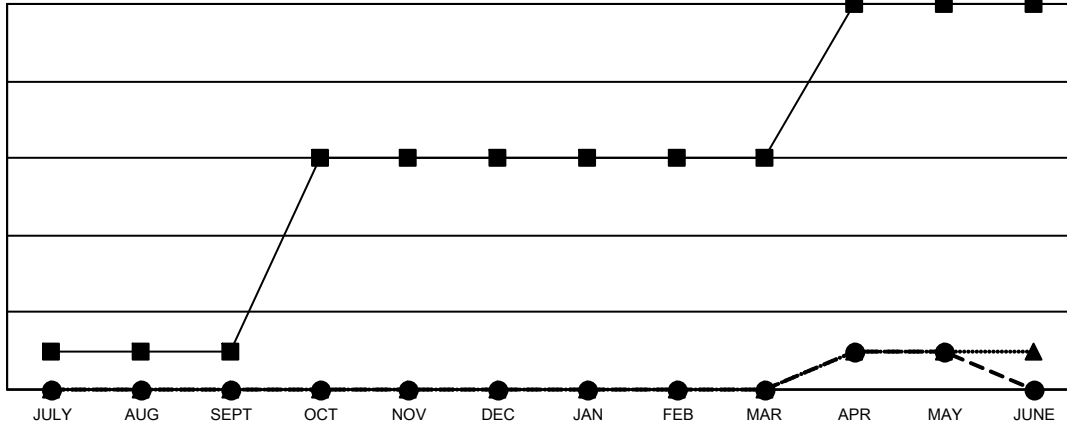
Multiple District 26

LOCATION: MISSOURI

Clubs			
RESULTS FOR 2022-2023			
QUARTER	NEW CLUB GOAL	NEW CLUBS	DROPPED CLUBS
JULY/AUG/SEPT	1	0	0
OCT/NOV/DEC	5	0	3
JAN/FEB/MAR	0	0	3
APR/MAY/JUNE	4	1	0

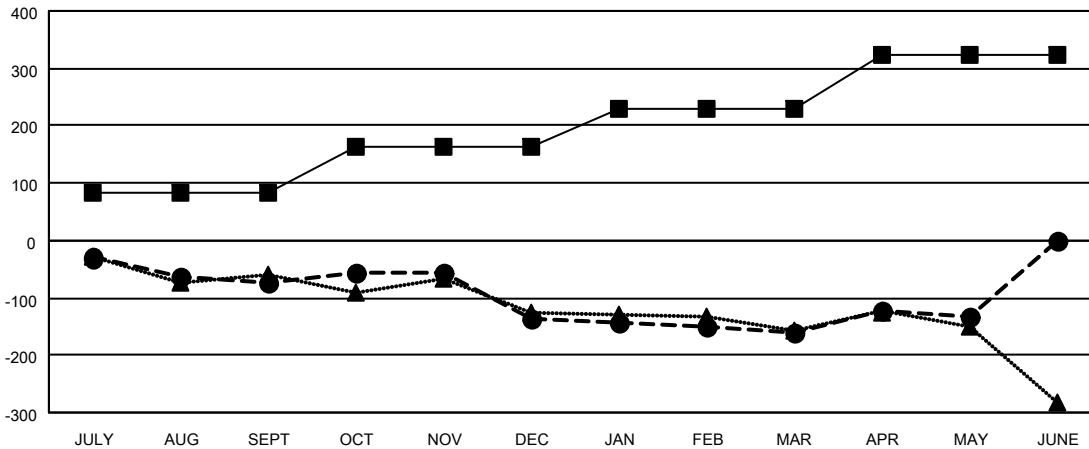
Members			
RESULTS FOR 2022-2023			
QUARTER	MEMBER GROWTH NET GOAL	MEMBER GROWTH ACTUAL	DROPPED MEMBERS ACTUAL (including transfers)
JULY/AUG/SEPT	83	126	193
OCT/NOV/DEC	79	167	210
JAN/FEB/MAR	68	162	173
APR/MAY/JUNE	94	141	110

GOALS AND ACTUAL NEW CLUBS CUMULATIVE



- CURRENT YEAR GOALS FOR NEW CLUBS
- CURRENT YEAR ACTUAL NEW CLUBS
- ▲- LAST YEAR ACTUAL NEW CLUBS

GOALS AND ACTUAL MEMBERS CUMULATIVE



- MEMBER GROWTH NET GOAL
- MEMBER GROWTH ACTUAL
- ▲- LAST YEAR MEMBERSHIP ACTUAL

DROPPED CLUBS: 6	141 CLUBS OF 294 ADDED 1 OR MORE NEW MEMBERS	GENDER DISTRIBUTION
DROPPED MEMBERS	CLICK HERE FOR CUMULATIVE MEMBERSHIP DATA	MALE 5,178 (71.29%)
DECEASED 99		FEMALE 2,085 (28.71%)
CLUB CANCELLED 27		NON BINARY 0 (0.00%)
OTHER 560		PREFER NOT TO ANSWER 0 (0.00%)
TOTAL 686		TOTAL FAMILY UNIT MEMBERS 1,254
		FAMILY MEMBERS PAYING HALF DUES 640